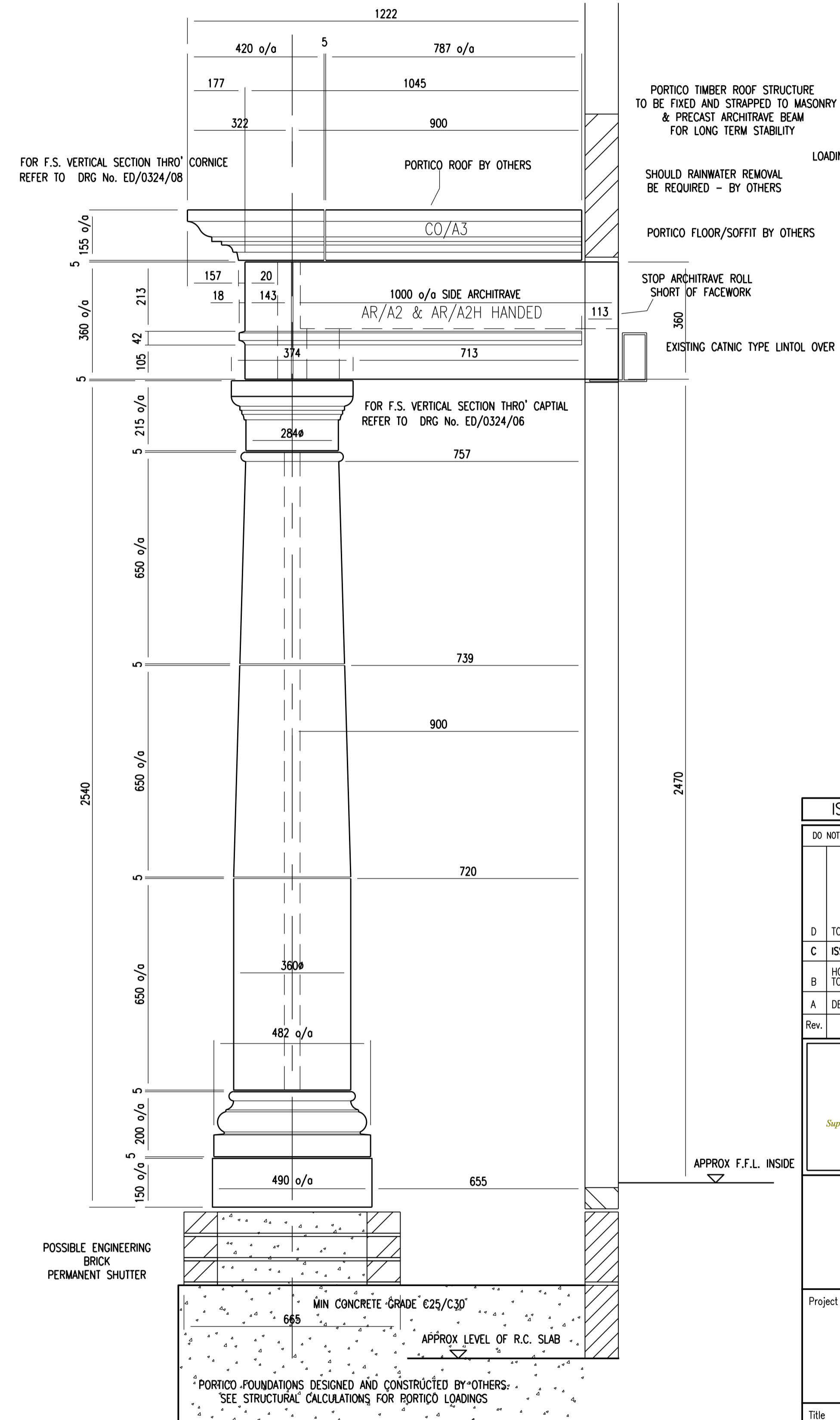


FRONT ELEVATION OF PORTICO

SCHEDULE – PER PORTICO

PEDESTAL	2No. – PD/A1 – 490 x 490 x 150 – 86kgs EACH	ARCHITRAVE	1No. – AR/A1 – 2626 x 308 x 360 – 488kgs EACH
BASE	2No. – BA/A1 – 482 x 482 x 200 – 88kgs EACH	ARCHITRAVE	1No. – AR/A2 – 1000 x 308 x 360 – 188kgs EACH
COLUMN	2No. – CL/A1 – 360 x 360 x 650 – 159kgs EACH	ARCHITRAVE	1No. – AR/A2H – 1000 x 308 x 360 – 188kgs EACH
COLUMN	2No. – CL/A2 – 360 x 360 x 650 – 145kgs EACH	CORNICE	3No. – CO/A1 – 585 x 420 x 155 – 76kgs EACH
COLUMN	2No. – CL/A3 – 322 x 322 x 650 – 129kgs EACH	CORNICE	1No. – CL/A2 – 585 x 420 x 155 – 76kgs EACH
CAPITAL	2No. – CA/A1 – 374 x 374 x 215 – 56kgs EACH	CORNICE	1No. – CA/A2H – 585 x 420 x 155 – 76kgs EACH
		CORNICE	2No. – CA/A3 – 787 x 420 x 155 – 102kgs EACH



PORTICO TIMBER ROOF STRUCTURE TO BE FIXED AND STRAPPED TO MASONRY & PRECAST ARCHITRAVE BEAM FOR LONG TERM STABILITY

LOADING ALLOWANCE TO PRECAST FROM ROOF
DEAD LOAD – 1.0Kn/m²
IMPOSED LOAD – 0.6Kn/m²

SHOULD RAINWATER REMOVAL BE REQUIRED – BY OTHERS

PORTICO FLOOR/SOFFIT BY OTHERS

STOP ARCHITRAVE ROLL SHORT OF FACEWORK

EXISTING CATNIC TYPE LINTOL OVER DOOR

ISSUED FOR CONSTRUCTION

DO NOT SCALE		
D	TOP OF ARCHITRAVE BEAM MADE	170 15/03/22
C	ISSUED FOR CONSTRUCTION	25/02/22
B	HOLE THRO' COLUMN SHAFT REVISED TO 48mm DIA	16/02/22
A	DETAILS COORDINATED WITH MOULDS	05/02/22
Rev.	Revision	Date



Project

Title

Details of Portico

Status	Information	Approval	Construction
WEBCAST	Sample Ref.	DRAWN :	
	PORTLAND	SCALE : 1:10	
		DATE : 29/01/2022	
DRG. No:– SBD/PT1	REV.		A